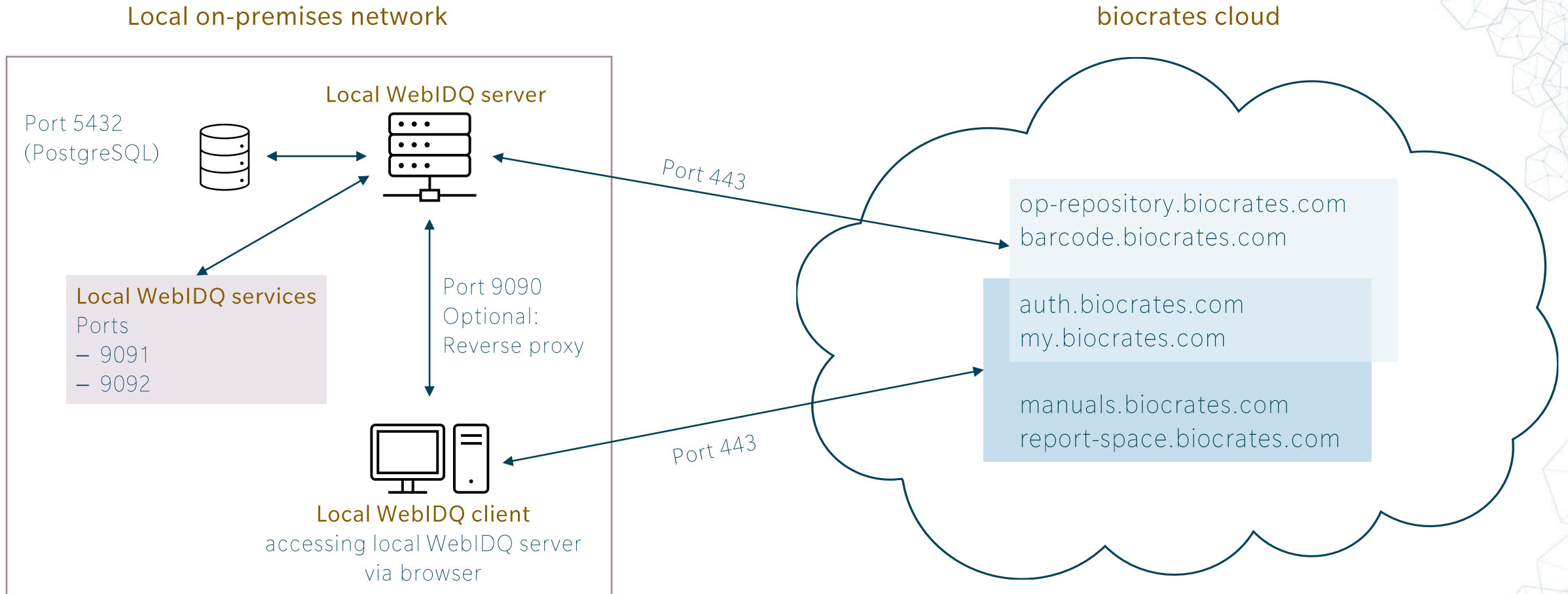


Communication overview



Network configuration

Adjustment of the local network configuration

After the WebIDQ installation on the WebIDQ server in the local network, the network configuration must be adjusted.

WebIDQ server:

- Inbound communication via port 9090 from WebIDQ client
 - **Optional:** you can setup a reverse proxy to encrypt communication. Please note that you need to adjust the WebIDQ on-premises URL in My biocrates in this case.
- Database communication via port 5432 (PostgreSQL)
- Communication with local WebIDQ services via ports 9091 and 9092 using the WebIDQ server host name
- External communication via port 443 to the biocrates cloud (*.biocrates.com)

WebIDQ client (via browser to WebIDQ server):

- External communication via port 443 to the biocrates cloud (*.biocrates.com)